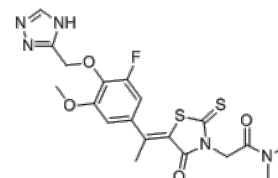


**Product Name** : NADI-351  
**Cat. No.** : PC-72454  
**CAS No.** : 2503017-11-4  
**Molecular Formula** : C<sub>19</sub>H<sub>20</sub>FN<sub>5</sub>O<sub>4</sub>S<sub>2</sub>  
**Molecular Weight** : 465.518  
**Target** : Notch  
**Solubility** : 10 mM in DMSO



## Biological Activity

NADI-351 is a specific small-molecule inhibitor of **Notch1** transcriptional complexes with IC<sub>50</sub> of 8.8 μM in cellular reporter assays.

NADI-351 inhibited OE33 cell growth in single dose MTT assays (EC<sub>50</sub>= 10 μM) and, more potently, in multi-dose colony formation assays (EC<sub>50</sub>=1.3 μM)

NADI-351 is 15 times more potent than IMR-1 in an NTC AlphaScreen assay.

NADI-351 selectively disrupted Notch1 transcription complexes, inhibited recruitment of Notch1 to the NTC (Notch Ternary Complex) and to the HES1 promoter, and reduced Notch1 recruitment to target genes.

NADI-351 inhibits tumor growth in Notch-dependent cancers and does not exert gastrointestinal toxicity associated with goblet cell metaplasia.

NADI-351 selectively inhibits stem-like esophageal adenocarcinoma (EAC) cell populations.

## References

Annamil Alvarez-Trotta, et al. Cancer Res. 2021 Jun 15;81(12):3347-3357.

**Caution: Product has not been fully validated for medical applications. Lab Use Only!**

E-mail: tech@probechem.com